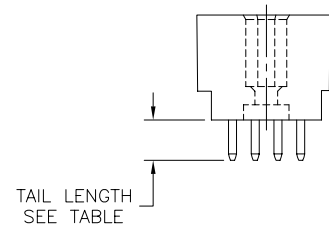
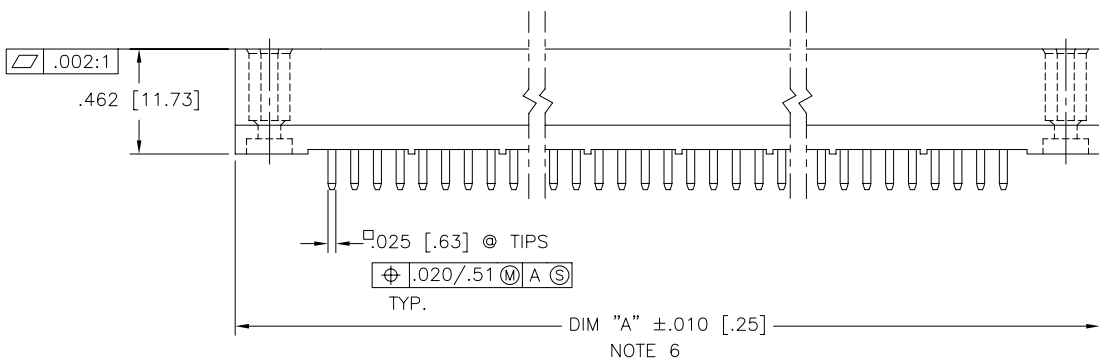
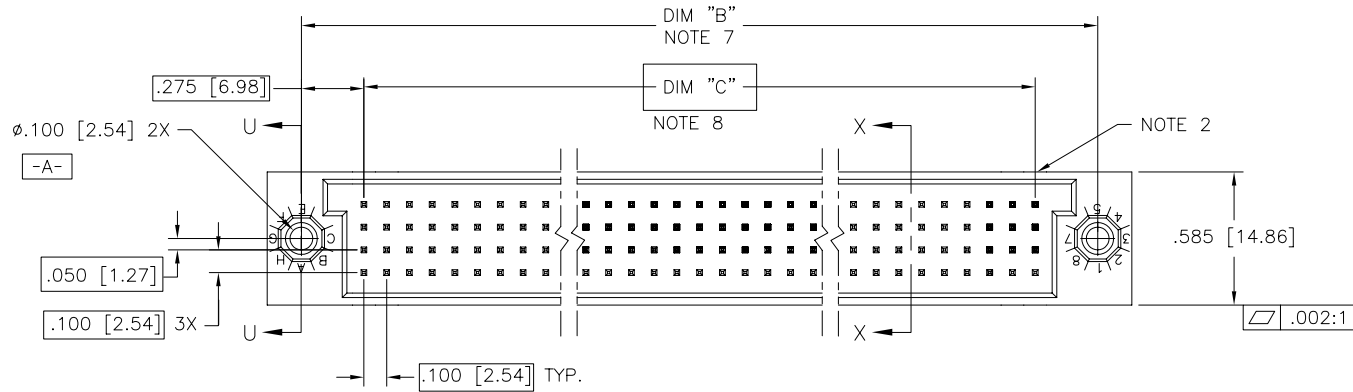


PRODUCT NUMBER  
SEE TABLE

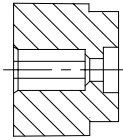


Copyright FCI

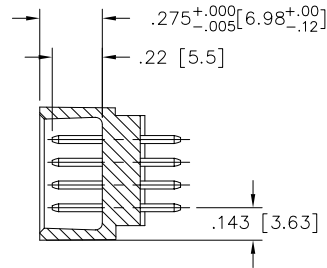
mat'l. code NOTE 4		surface ISO 1302 ✓		tolerance ISO 406 ISO 1101		projection ⊕		product family HPC	
ltr	ecp	no	dr	date	tolerances unless otherwise specified		INCH/MM	title	
K	v40941	PDP	6/1/94	angles	.xx±.01/.3			4 ROW VERTICAL HEADER	
L	v90018	HTB	1/8/99	linear	.xxx±.005/.13		W/SOLDER TAIL PINS, 0 G.P.		
M	v00272	JWS	2/1/00	0'±2'	.xxxx±.0020/.051		scale 1:1		
N	v05-0475	DAI	7/20/05	dr	D.INGRAM	7/20/05	FCI	dwg no	
P	v05-0723	HTB	7/20/05	engr	D.HORCHLER	7/20/05		sheet 1 of 4 size	
R	v05-1039	DAI	11/11/05	chr	T.BREWBAKER	7/20/05		50015 A3	
S	M06-0283	MHT	7/27/06	appd	D.HORCHLER	7/20/05		type Product Customer Drawing	
sheet	revision	S	S	S	S				
index	sheet	1	2	3	4				

form: A3

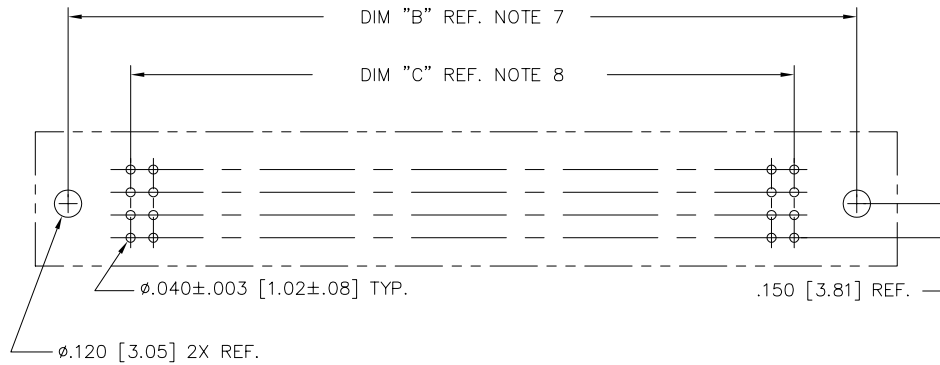
PRODUCT NUMBER  
SEE TABLE



SECTION U-U



SECTION X-X



RECOMMENDED PCB LAYOUT  
(ALL HOLES LOCATED ON .100/2.54 GRID  
UNLESS OTHERWISE SPECIFIED)



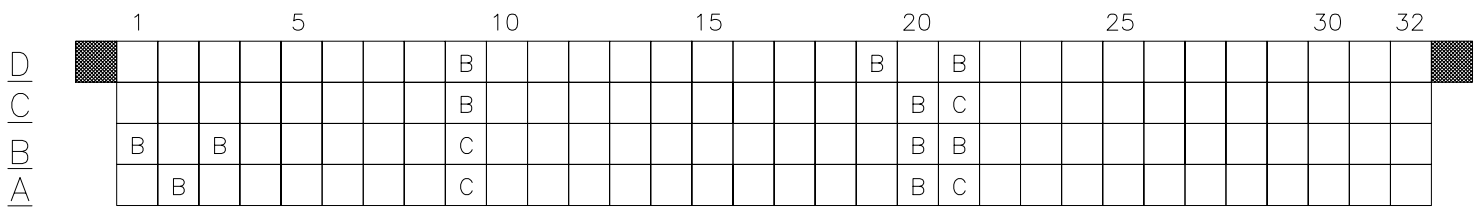
Copyright FCI

mat'l. code NOTE 4		surface ISO 1302 <input checked="" type="checkbox"/>	tolerance ISO 406 ISO 1101	projection 	product family HPC
ltr	ecn no	dr	date	tolerances unless otherwise specified	title
S				angles linear .xx±.01/.3 .xxx±.005/.13 .xxxx±.0020/.051	4 ROW VERTICAL HEADER W/SOLDER TAIL PINS, 0 G.P.
				0°±2'	scale 1:1
		dr	D.INGRAM	7/20/05	dwg no
		enr	D.HORCHLER	7/20/05	sheet 2 of 4 size
		chr	T.BREWBAKER	7/20/05	50015
		appd	D.HORCHLER	7/20/05	A3
sheet index	revision sheet				type Product Customer Drawing



PRODUCT NUMBER  
SEE TABLE

50015-XX022 AND 50015-XX022LF ONLY



PIN  
1

NOTES FOR -XX022 AND -XX022LF ONLY:

1. ALL POSITIONS ARE LOADED WITH "A" EXCEPT WHERE NOTED.
2. COLUMN 1, ROW A IS DESIGNATED AS SIGNAL PIN 1, AS VIEWED FROM THE MATING FACE.
3. SIGNAL DATA FOR 50015-XX022 AND 50015-XX022LF:  
SIZE 4 x 32  
TOTAL NO. OF POSITIONS - 128  
NO. OF POSITIONS LOADED - 128

ITEM KEY	QTY.	MATING LENGTH
A	113	.180/4.57
B	11	.260/6.60
C	4	.220/5.59



Copyright FCI

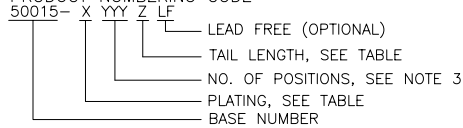
form: A3

mat'l. code	NOTE 4			surface	ISO 1302	tolerance	ISO 406 ISO 1101	projection	product family
ltr	ecn	no	dr	date	tolerances unless otherwise specified				HPC
S					angles	linear	.XX±.01/.3 .XXX±.005/.13 .XXX±.0020/.051	INCH/MM	title
					0'±2'			scale 1:1	4 ROW VERTICAL HEADER W/SOLDER TAIL PINS, 0 G.P.
				dr	D.INGRAM	7/20/05			dwg no
				enr	D.HORCHLER	7/20/05			sheet 3 of 4 size
				chr	T.BREWBAKER	7/20/05		50015	A3
				appd	D.HORCHLER	7/20/05		type	Product Customer Drawing
sheet index	revision sheet								

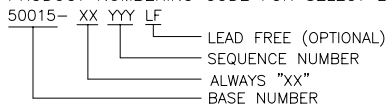
PRODUCT NUMBER	NUMBER OF POSITIONS NOTE 3	TAIL LENGTH ±.015/0.38	CONTACT PLATING
50015-1YYYA	YYY	.177/4.50	30u"/.76u Au
50015-1YYYC	YYY	.533/13.54	30u"/.76u Au
50015-1YYXD	YYY	.733/18.62	30u"/.76u Au
50015-1YYYG	YYY	.250/6.35	30u"/.76u Au
50015-1YYYJ	YYY	.120/3.05	30u"/.76u Au
50015-3YYYA	YYY	.177/4.50	50u"/1.27u Au
50015-3YYYC	YYY	.533/13.54	50u"/1.27u Au
50015-3YYXD	YYY	.733/18.62	50u"/1.27u Au
50015-3YYYG	YYY	.250/6.35	50u"/1.27u Au
50015-3YYYJ	YYY	.120/3.05	50u"/1.27u Au
50015-5YYYA	YYY	.177/4.50	30u"/.76u GXT
50015-5YYYALF	YYY	.177/4.50	30u"/.76u GXT
50015-5YYYC	YYY	.533/13.54	30u"/.76u GXT
50015-5YYYCLF	YYY	.533/13.54	30u"/.76u GXT
50015-5YYXD	YYY	.733/18.62	30u"/.76u GXT
50015-5YYXDLF	YYY	.733/18.62	30u"/.76u GXT
50015-5YYYG	YYY	.250/6.35	30u"/.76u GXT
50015-5YYYGLF	YYY	.250/6.35	30u"/.76u GXT
50015-5YYYJ	YYY	.120/3.05	30u"/.76u GXT
50015-5YYYJLF	YYY	.120/3.05	30u"/.76u GXT
50015-XX022	128	.250/6.35	30u"/.76u Au
50015-XX022LF	128	.250/6.35	30u"/.76u GXT

NOTES:

1. PRODUCT NUMBERING CODE



PRODUCT NUMBERING CODE FOR SELECT LOAD



- ② MANUFACTURE'S LOGO, PN, AND LOT CODE TO APPEAR ON THIS SURFACE.
- ③ THIS PRODUCT IS CONFIGURED IN SIZES OF 6 THRU 80 COLUMNS IN INCREMENTS OF ONE, I.E. 6, 7, 8, 9, .....79, 80.
- ④ MATERIAL:  
HOUSING - GLASS AND MINERAL FILLED HIGH TEMPERATURE THERMOPLASTIC, FLAME RETARDANT PER UL94V-0. COLOR-BLACK  
CONTACT - PHOS BRONZE
- 5. PLATING:  
CONTACT AREA - SEE PRODUCT NUMBER TABLE  
TAILS-EITHER TIN OR TIN LEAD, SEE PRODUCT NUMBER TABLE
- ⑥ DIMENSION "A" CALCULATION = .100 (2.54) X NO. OF COLUMNS + .75 (19.1)
- ⑦ DIMENSION "B" CALCULATION = .100 (2.54) X NO. OF COLUMNS + .450(11.43)
- ⑧ DIMENSION "C" CALCULATION = .100 (2.54) X NO. OF COLUMNS - .100(2.54)
- 9. ALL POSITIONS ARE LOADED EXCEPT FOR -XXYYY ASSEMBLIES WHICH HAVE SELECTIVE LOADING.
- 10. THIS PRODUCT (WITH "LF" SUFFIX) MEETS EUROPEAN UNION DIRECTIVES AND OTHER COUNTRY REGULATIONS AS DESCRIBED IN GS-22-008.
- 11. THIS HOUSING WILL WITHSTAND EXPOSURE TO 260°C PEAK TEMPERATURE FOR 10-30 SECONDS IN A CONVECTION, INFRA-RED OR VAPOR PHASE REFLOW OVEN.

mat'l. code		surface		tolerance		projection		product family	
NOTE 4		ISO 1302 ✓		ISO 406		ISO 1101		HPC	
ltr	ecn	no	dr	date		tolerances unless otherwise specified		title	
S						.XX±.01/.3		4 ROW VERTICAL HEADER	
						.XXX±.005/.13		W/SOLDER TAIL PINS, 0 G.P.	
						.XXXX±.0020/.051		scale 1:1	
				dr		D.INGRAM 7/20/05		dwg no	
				enrg		D.HORCHLER 7/20/05		sheet 4 of 4 size	
				chr		T.BREWBAKER 7/20/05		50015 A3	
				appd		D.HORCHLER 7/20/05		type Product Customer Drawing	
sheet	revision								
index	sheet								



FCIconnect.com

Copyright FCI